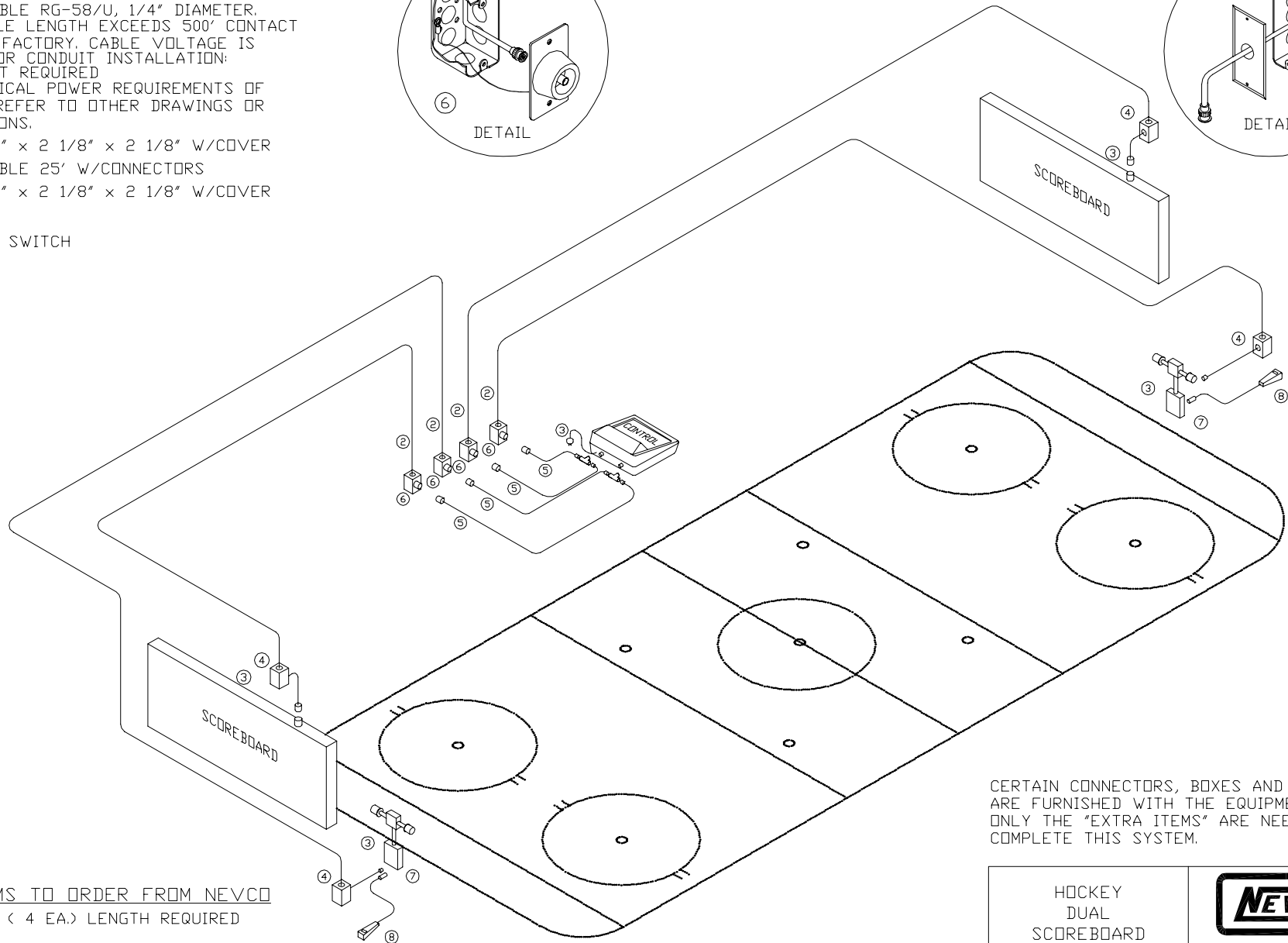
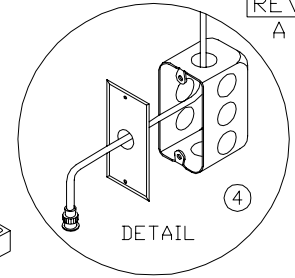
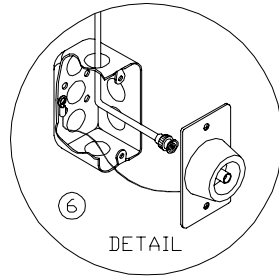


NOTES


1. WALL BOXES MUST BE EARTH GROUNDED TO THE SAME GROUND OR GUARANTEE IS VOID.
2. CONTROL CABLE RG-58/U, 1/4" DIAMETER. IF ANY CABLE LENGTH EXCEEDS 500' CONTACT THE NEVCO FACTORY. CABLE VOLTAGE IS 5 VOLTS. FOR CONDUIT INSTALLATION: 1/2" CONDUIT REQUIRED
3. FOR ELECTRICAL POWER REQUIREMENTS OF EACH ITEM REFER TO OTHER DRAWINGS OR SPECIFICATIONS.
4. WALL BOX 4" x 2 1/8" x 2 1/8" W/COVER
5. CONTROL CABLE 25' W/CONNECTORS
6. WALL BOX 4" x 2 1/8" x 2 1/8" W/COVER
7. GL-H5
8. GOAL JUDGE SWITCH



EXTRA ITEMS TO ORDER FROM NEVCO

- 2 009-0084 (4 EA.) LENGTH REQUIRED

CERTAIN CONNECTORS, BOXES AND CABLES ARE FURNISHED WITH THE EQUIPMENT SHOWN. ONLY THE "EXTRA ITEMS" ARE NEEDED TO COMPLETE THIS SYSTEM.

HOCKEY DUAL SCOREBOARD & GL-H5 SYSTEM		 NEVCO SCOREBOARD CO. GREENVILLE, ILLINOIS 62246
DRAWING NO. C8322		
DRAWN BMK	DATE 10/04/01	SHEET 1 OF 1